

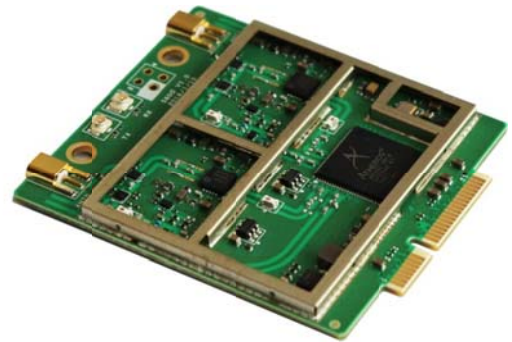
PRM5800 is a 5GHz ISM band wireless adapter with Mini PCIe interface developed by Zencheer, its physical size is 52\*48mm. PRM5800 is easy to integrated to customers' network processing board and It's suitable for long distance point-to-point or point-to-multi-point applications.

## Key Features

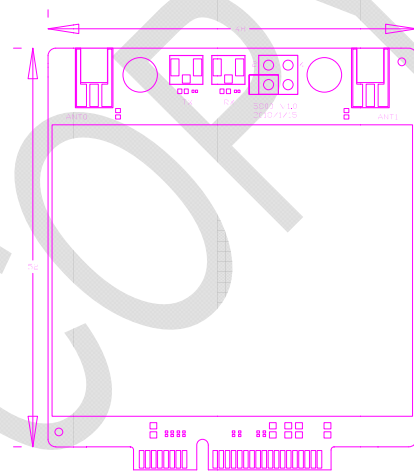
- 5.18-5.825GHz ISM Band
- 2\*2 MIMO
- Output Power Up To 24dBm
- Rx Sensitivity Up To 90dBm

## Specifications

<b>Operating Frequency</b>	5.18-5.825GHz
<b>Channel Bandwidth</b>	5/10/20/40MHz
<b>Available Channel<sup>1</sup></b>	5180-5320MHz 5500-5700MHz 5745-5825MHz
<b>Output Power<sup>2</sup></b>	
OFDM BPSK HT20/HT40	24dBm
OFDM 64-QAM HT20/HT40	21dBm
<b>Rx Sensitivity<sup>3</sup></b>	
OFDM BPSK HT20	-90dBm
OFDM BPSK HT40	-87dBm
OFDM 64-QAM HT20	-70dBm
OFDM 64-QAM HT40	-67dBm
<b>Modulation</b>	OFDM BPSK/QPSK/16-QAM/64-QAM
<b>Antenna</b>	2 MMCX
<b>Transmission Rate<sup>4</sup></b>	
OFDM 64-QAM HT20	80Mbps
OFDM 64-QAM HT40	TBD
<b>Interface<sup>5</sup></b>	Mini PCI Express
<b>Debug</b>	
Tx Enable <sup>6</sup>	1 IPX
Rx Enable <sup>7</sup>	1 IPX
<b>Power Supply</b>	3.3V/1A, 5.0V/1.5A
<b>Size</b>	52*48*4.7mm
<b>Operating Range</b>	Storage: 40°C~+125°C Operation: -20°C~+65°C
<b>Weight</b>	15g



## Mechanical



## Linux Driver

ATH9K

## Attachment

No

<sup>1</sup> Channel spacing: 20MHz

<sup>2</sup> Average power of single antenna with 99% duty cycle

<sup>3</sup> Rx sensitivity of single antenna with 10% packet loss

<sup>4</sup> TCP transmission rate with multi stream

<sup>5</sup> Pin definition please refer to appendix 1

<sup>6</sup> Output high (3.3V) case in Tx state and output low (0V) case in Rx state

<sup>7</sup> Output low (0V) case in Tx state and output high (3.3V) case in Rx state

Appendix 1 PRM5800 Pin Definition

Number	Name	Description	Number	Name	Description
1	WAKE_L	Enable, optional	27	GND	GND, required
2	3.3V	3.3V power supply, required	28	1.5V	No connection
3	RESERVED	I/O	29	GND	GND, required
4	GND	GND, required	30	SMB_CLK	No connection
5	RESERVED	No connection	31	PETNO	Tx, required
6	1.5V	No connection	32	SMB_DATA	No connection
7	CLKREQ_L	Clock request, optional	33	PETPO	Tx+, required
8	UIM_PWR	No connection	34	GND	GND, required
9	GND	GND, required	35	GND	GND, required
10	UIM_DATA	No connection	36	USB_D-	No connection
11	REFCLK-	Reference clock-, required	37	RESERVED	5V power supply, required
12	UIM_CLK	No connection	38	USB_D+	No connection
13	REFCLK+	Reference clock+, required	39	RESERVED	5V power supply, required
14	UIM_RESET	No connection	40	GND	GND, required
15	GND	GND, required	41	RESERVED	5V power supply, required
16	UIM_VPP	No connection	42	LED_WWAN	No connection
17	UIM_C8	No connection	43	RESERVED	GND, optional
18	GND	GND, required	44	LED_WLAN	I/O, optional
19	UIM_C4	No connection	45	RESERVED	GND, optional
20	W_DISABLE	I/O, optional	46	LED_WPAN	No connection
21	GND	GND, required	47	RESERVED	No connection
22	PERST	Reset, required	48	1.5V	No connection
23	PERNO	Rx-, required	49	RESERVED	No connection
24	3.3V AUX	No connection	50	GND	GND, required
25	PERPO	Rx+, required	51	RESERVED	No connection
26	GND	GND, required	52	3.3V	3.3V power supply, required